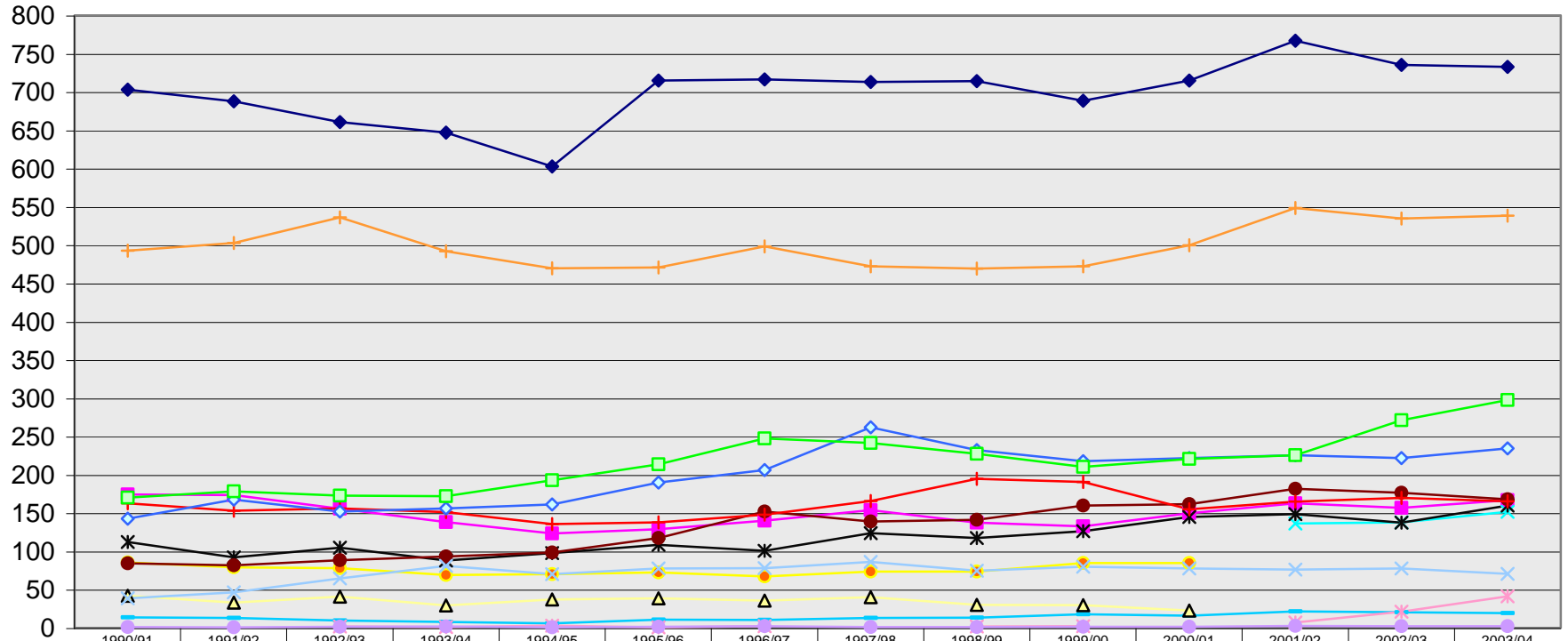


Annualized Undergraduate Equivalent Enrolments Taught (EET) - Humanities



English	703.2	687.8	660.7	646.8	602.7	715.0	716.5	713.1	714.2	688.5	715.0	766.8	735.3	732.6
French	174.1	173.7	155.6	138.2	123.5	128.8	140.2	153.7	137.3	132.7	149.6	162.9	156.9	166.7
Germanic Std	85.4	79.3	78.2	69.1	70.3	72.5	67.3	73.5	73.6	84.7	84.7			
Germanic & Russian Studies												136.5	138.0	151.6
Greek & Rom. Std	112.1	92.2	104.9	88.1	97.6	108.6	100.8	123.9	117.5	126.4	145.0	148.7	137.5	159.7
Hisp. & Ital. Std	84.2	81.7	88.4	93.4	98.5	117.3	151.9	138.8	141.2	159.9	161.6	181.5	176.4	168.1
History	492.8	502.8	536.1	492.0	469.6	470.9	498.1	472.4	469.3	472.4	499.7	548.5	534.6	538.3
Linguistics	162.8	153.0	156.2	151.2	135.6	137.8	147.8	165.6	194.6	190.6	155.1	165.0	169.9	165.4
Medieval Studies	13.6	12.9	9.7	7.7	5.8	10.9	10.4	13.1	13.5	17.9	15.8	21.6	20.5	19.5
Pac. & Asian Std	142.7	167.8	151.8	156.0	161.4	189.9	206.1	261.8	232.3	217.9	222.0	225.6	222.0	234.3
Philosophy	170.1	178.3	172.8	172.0	192.8	213.7	247.6	241.4	227.4	210.4	220.6	225.5	271.1	297.8
Slav. Std	42.1	33.2	40.7	29.3	37.1	38.5	35.7	40.0	30.2	29.8	22.6			
Women's Studies	38.5	46.5	64.8	81.1	70.2	77.7	78.0	86.2	74.6	80.0	77.7	76.1	77.5	70.5
Interdisciplinary			1.7	1.3	3.0	0.8	2.3		2.0	2.4		7.1	21.0	41.3
Taught at Fac. Level	1.1	0.9	1.4	1.7	0.9	1.4	2.1	1.2	1.2	1.4	1.6	2.6	2.1	2.3

Source: ClassPops (ARAI Table 1)
University of Victoria

Institutional Planning & Analysis
March 4, 2004